

4

3

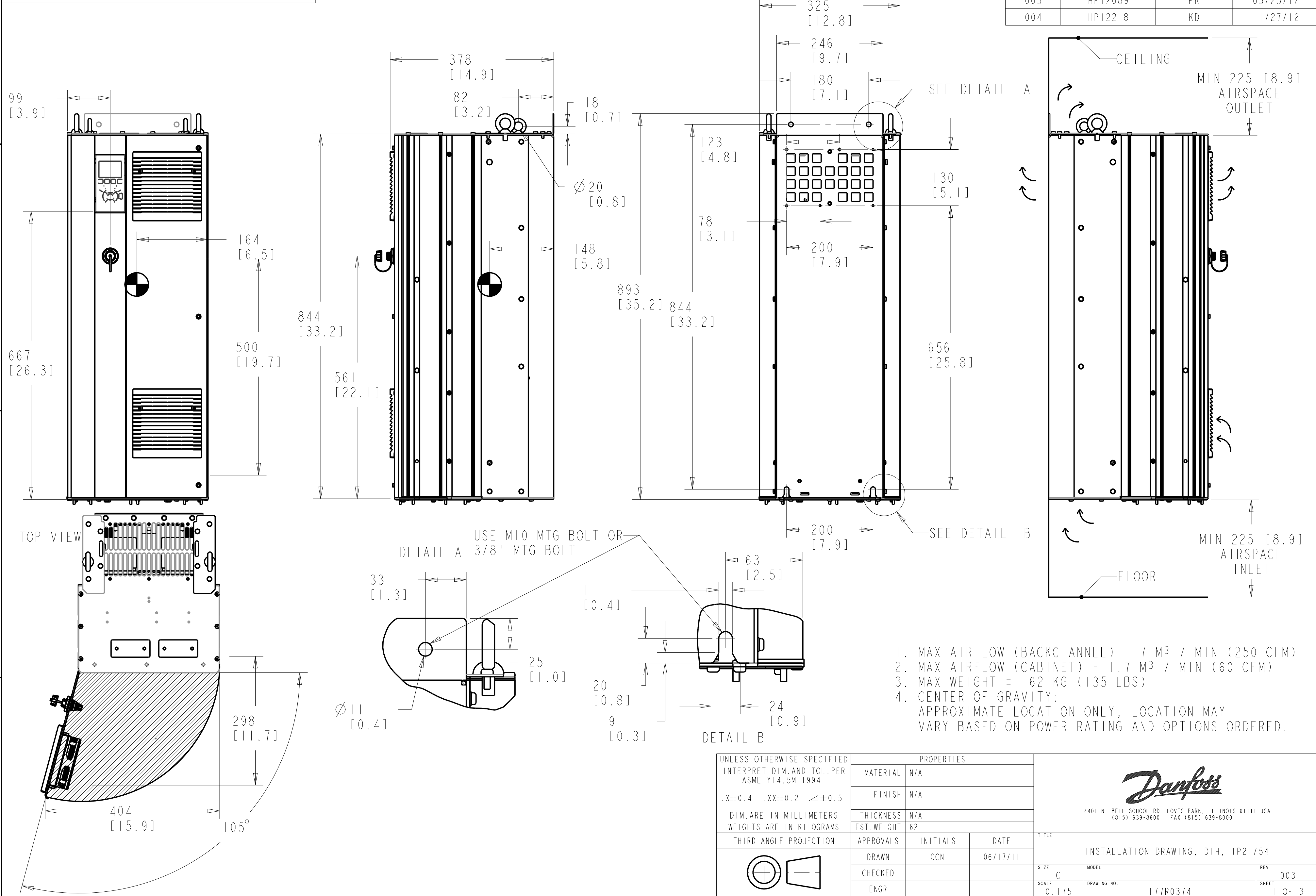
2

1

- NOTICE -

THIS DOCUMENT CONTAINS PROPRIETARY INFORMATION OF DANFOSS DRIVES. IT IS LOANED BY DANFOSS DRIVES SUBJECT TO THE CONDITIONS THAT IT AND THE INFORMATION EMBODIED THEREIN SHALL BE USED ONLY FOR RECORD AND REFERENCE PURPOSES. SHALL NOT BE USED OR CAUSED TO BE USED IN ANY WAY PREJUDICIAL TO THE INTERESTS OF DANFOSS DRIVES. SHALL NOT BE REPRODUCED OR COPIED IN WHOLE OR IN PART OR DISCLOSED TO ANYONE WITHOUT THE DIRECT WRITTEN PERMISSION OF DANFOSS DRIVES, AND SHALL BE RETURNED UPON REQUEST.

REVISION HISTORY			
REV	ECN NUMBER	ENTRY BY	DATE
001	INITIAL RELEASE	PK	01/25/12
002	HP12055	KD	03/13/12
003	HP12089	PK	05/25/12
004	HP12218	KD	11/27/12



1. MAX AIRFLOW (BACKCHANNEL) - 7 M³ / MIN (250 CFM)
2. MAX AIRFLOW (CABINET) - 1.7 M³ / MIN (60 CFM)
3. MAX WEIGHT = 62 KG (135 LBS)
4. CENTER OF GRAVITY: APPROXIMATE LOCATION ONLY, LOCATION MAY VARY BASED ON POWER RATING AND OPTIONS ORDERED.

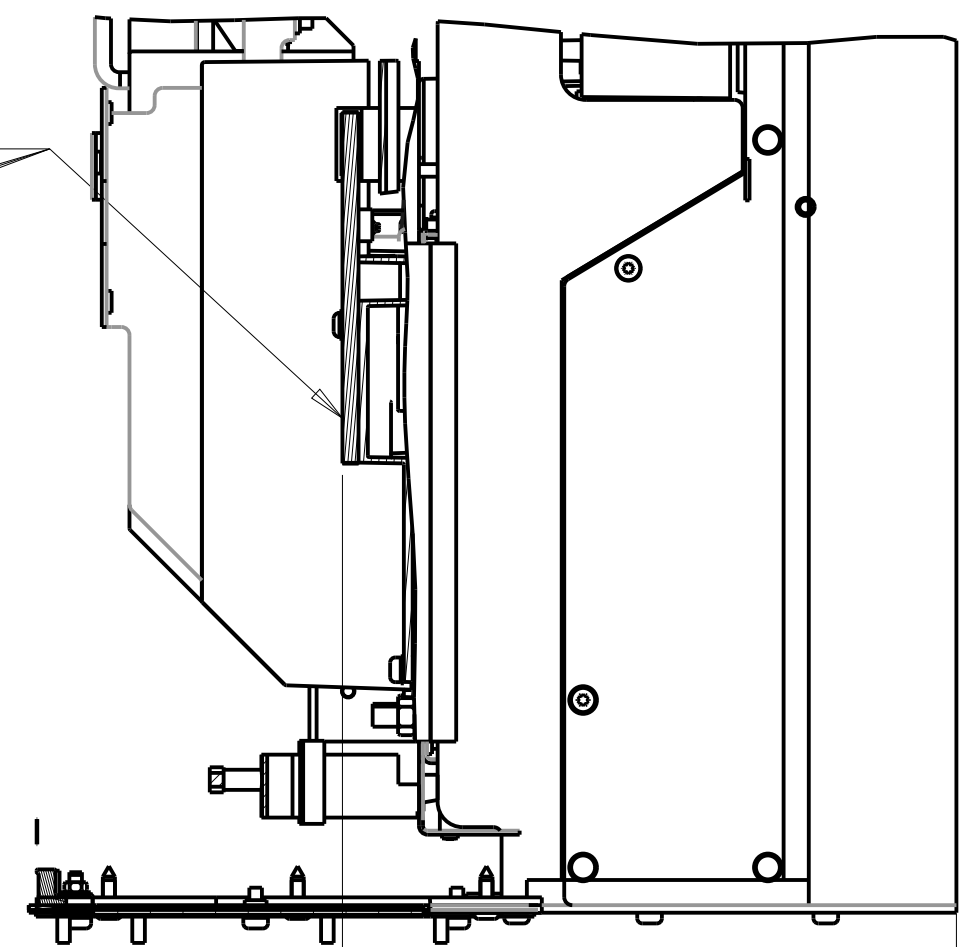
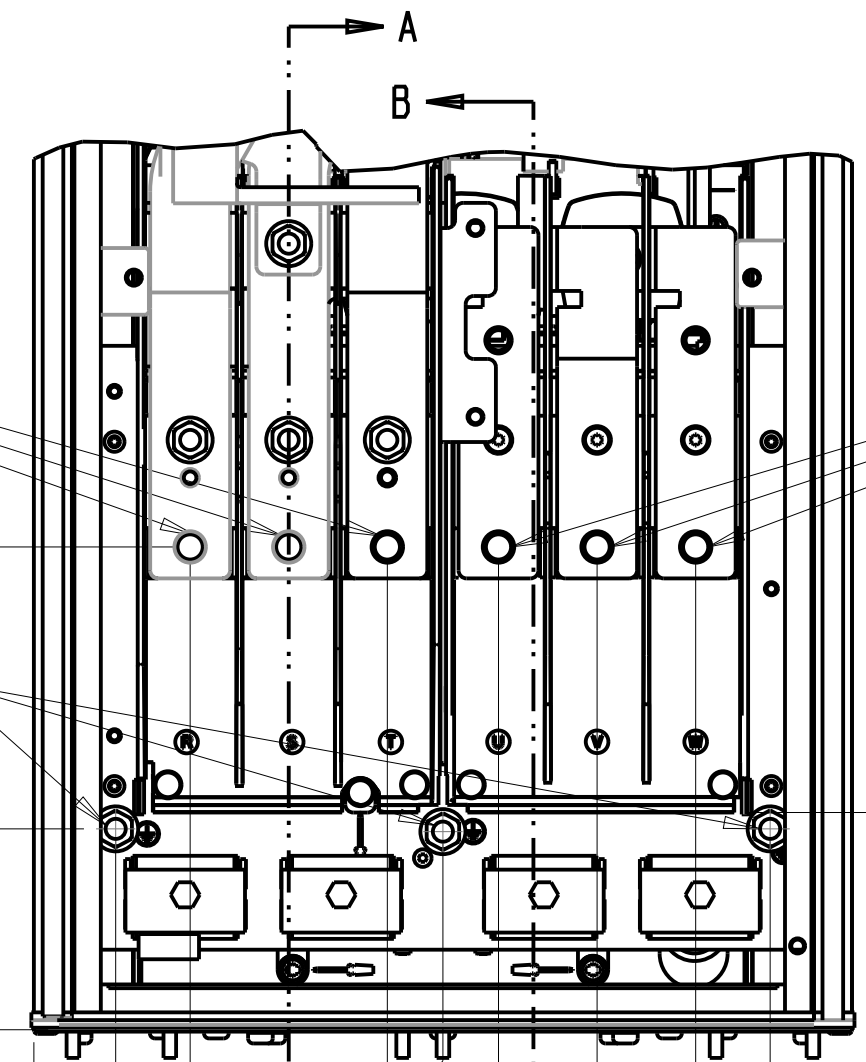
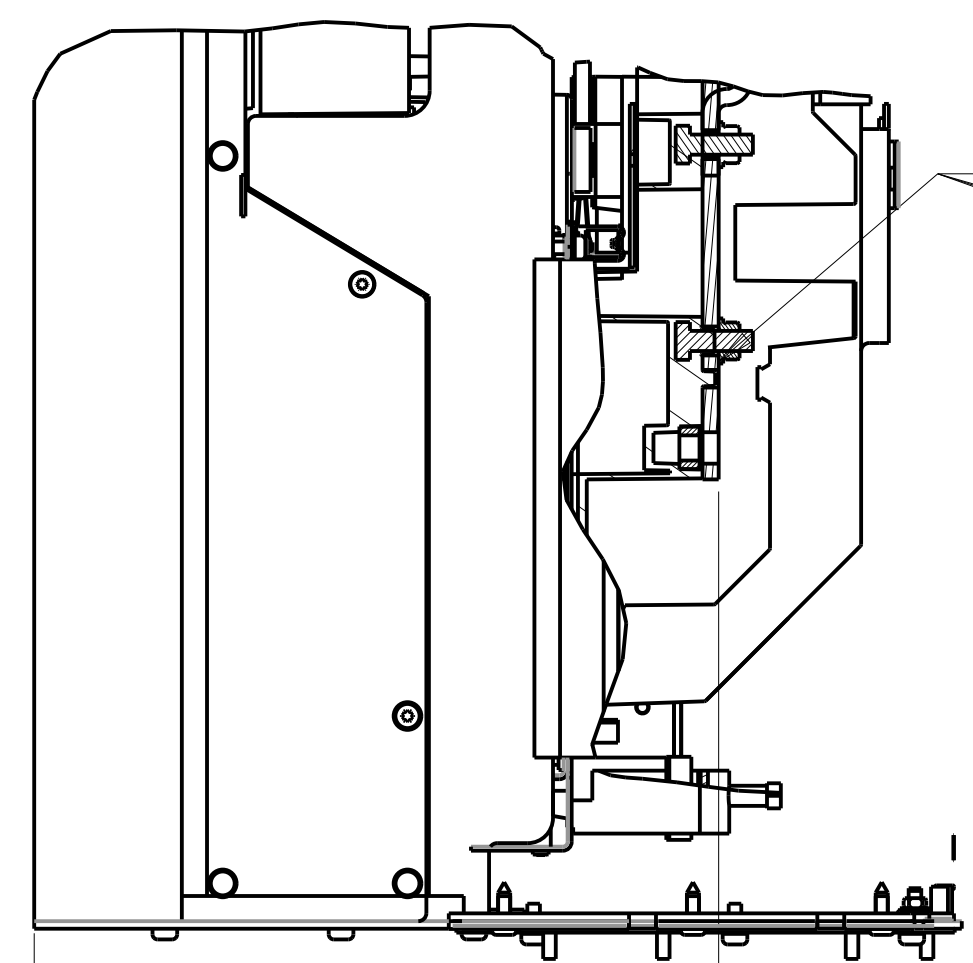
UNLESS OTHERWISE SPECIFIED INTERPRET DIM AND TOL PER ASME Y14.5M-1994		PROPERTIES		
.X±0.4 .XX±0.2 ≤±0.5		MATERIAL	N/A	
DIM. ARE IN MILLIMETERS WEIGHTS ARE IN KILOGRAMS		FINISH	N/A	
THIRD ANGLE PROJECTION		THICKNESS	N/A	
		EST. WEIGHT	62	
		APPROVALS	INITIALS	DATE
		DRAWN	CCN	06/17/11
		CHECKED		
		ENGR		
		TITLE		
		INSTALLATION DRAWING, DIH, IP21/54		
		SIZE	MODEL	REV
		C		003
		SCALE	DRAWING NO.	SHEET
		0.175	177R0374	1 OF 3



4401 N. BELL SCHOOL RD. LOVES PARK, ILLINOIS 61111 USA
(815) 639-8600 FAX (815) 639-8000

SECTION A-A
MAINS TERMINALS

SECTION B-B
MOTOR TERMINALS



MAINS TERMINAL

MOTOR TERMINAL

192
[7.6]

3X M8X20 STUD
WITH NUT

GROUND 80
[3.1]

86
[3.4]

0
[0.0]

0
[0.0]

272
[10.7]

33
[1.3]

62
[2.4]

140
[5.5]

163
[6.4]

224
[8.8]

293
[11.5]

0
[0.0]

101
[4.0]

185
[7.3]

263
[10.4]

(R)

(T)

(V)

(S)

(U)

(W)

27
[1.0]

MAINS SIDE
CABLE ENTRY

274
[10.8]

137
[5.4]

135
[5.3]

205
[8.1]

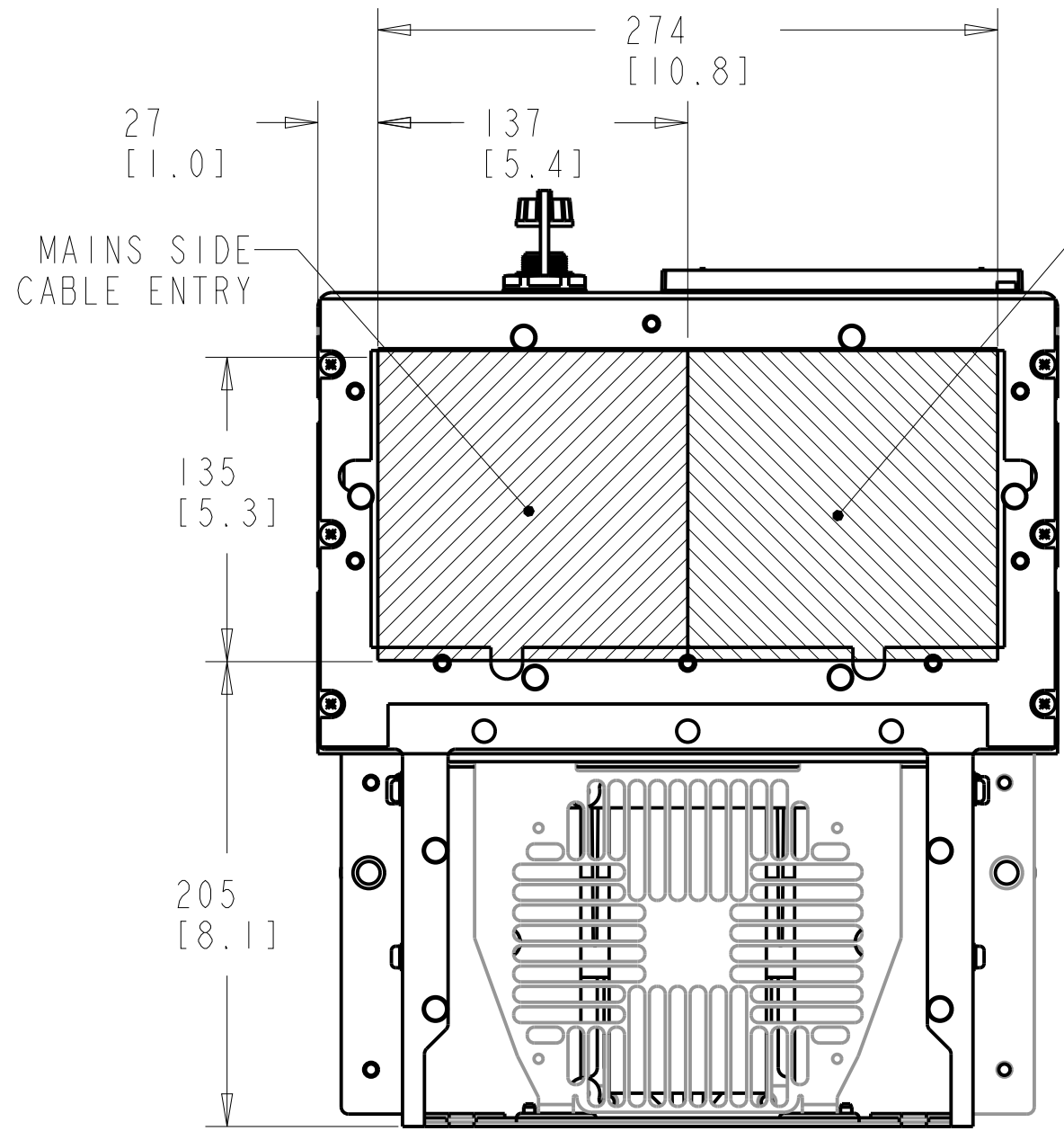
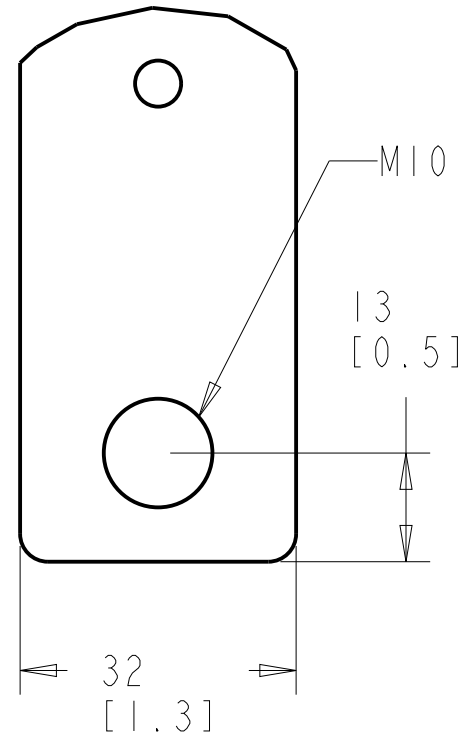
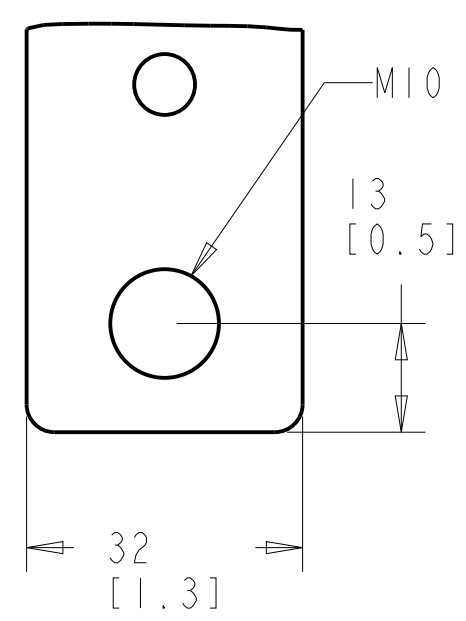
MOTOR SIDE
CABLE ENTRY

244
[9.6]

0
[0.0]

MAINS TERMINAL

MOTOR TERMINAL



BOTTOM VIEW

NOTES:

1. PLACE CABLES THROUGH MARKED AREAS
2. 95 MM² (3/0) MAX WIRE SIZE

TITLE INSTALLATION DRAWING, DIH, IP21/54		
SIZE C	MODEL	REV 003
SCALE 0.333	DRAWING NO. 177R0374	SHEET 2 OF 3

THE TABLES BELOW MAY BE USED TO CONFIRM THE CORRECT FRAME SIZE AND DRAWING FOR A SPECIFIC DRIVE RATING (POWER AND VOLTAGE). THIS DRAWING IS FOR DIH FRAMES, THE TABLES BELOW IDENTIFY WHICH DRIVES ARE REPRESENTED BY THIS DRAWING.

THE TABLE BELOW CAN BE USED TO DETERMINE THE FRAME SIZE IF THE SPECIFIC MODEL/TYPECODE IS KNOWN.

KW RATED DRIVES							
KW HIGH OVERLOAD	45	55	75	90	110	132	160
KW NORMAL OVERLOAD	55	75	90	110	132	160	200
400V				DIH	DIH	DIH	
500V					DIH	DIH	DIH
525V	DIH			DIH	DIH	DIH	
690V		DIH	DIH	DIH	DIH	DIH	

HORSEPOWER RATED DRIVES						
HP HIGH OVERLOAD	60	75	100	125	150	200
HP NORMAL OVERLOAD	75	110	125	150	200	250
460V				DIH	DIH	DIH
575V	DIH	DIH	DIH	DIH	DIH	

PLATFORM	VOLTAGE	MODEL/TYPECODE	FRAME(IP21/IP54)
HVAC	T4	FC-102N110T4	DIH
		FC-102N132T4	
		FC-102N160T4	
	T7	FC-102N75KT7	
		FC-102N90KT7	
		FC-102N110T7	
AQUA	T4	FC-202N132T4	
		FC-202N160T4	
		FC-202N110T4	
	T7	FC-202N75KT7	
		FC-202N90KT7	
		FC-202N132T7	
AUTOMATION	T5	FC-302N90KT5	
		FC-302N110T5	
		FC-302N132T5	
	T7	FC-302N55KT7	
		FC-302N75KT7	
		FC-302N90KT7	
		FC-302N110T7	
		FC-302N132T7	

TITLE			
INSTALLATION DRAWING, DIH, IP21/54			
SIZE	MODEL	REV	
C		003	
SCALE	DRAWING NO.	SHEET	
0.175	177R0374	3 OF 3	